

TERRA-S FIXTURE

The Flex-Driveby LEDscape (IP68) is developed to create diffuse light lines. These casted light lines made from stainless steel (AISI 316L) are walk over and drive over, making them ideal for public applications.

PRODUCT HIGHLIGHTS

- **BINNING:** ± 50K
- **CRI:** 90
- **IP RATING:** IP67
- **STARTER CABLE:** 6, 19 & 49FT
- **EXPECTED LIFETIME:** L70 > 50,000 hours
- **OPERATING TEMP:** - 40 ° F to 122 ° F
- **RATING:** ETL
- **HOUSING:** Aluminum
- **VOLTAGE:** 24v
- **WARRANTY:** 5 Years
- **DIMMABLE:** 0-10V, Triac, and Custom
- BAA available, consult factory

AVAILABLE COLORS

- Ultra Warm White 2400K
- Extra Warm White 2700K
- Warm White 3000K
- Cool White 3500K
- Natural White 4000K
- Cold White 6500K
- Custom

CHARACTERISTICS

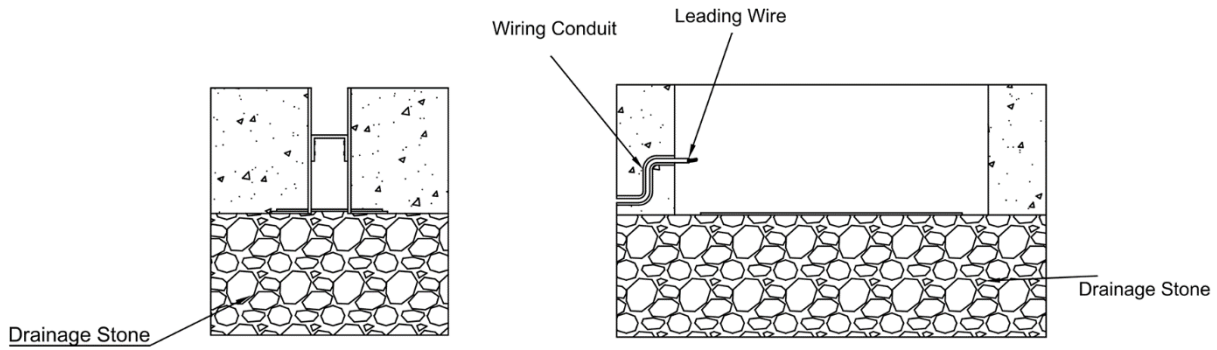
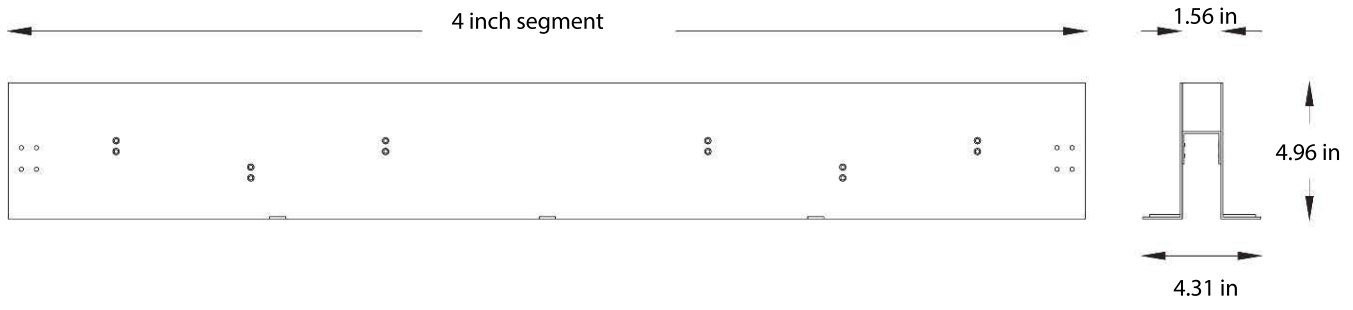
Power	MAX Run Length	Dimming
3.5 w/ FT	16.4 FT	0-10V, Triac/ELV, DMX
<small>Notes: Lumen calculated at 2700K.</small>		

ORDERING CHART

Example: Terra-S-4-27-24-D1

Product code	Length		Color		Voltage	Dimming	
Terra-S Curved Drive-over	2	23.25 IN	24	2400K	24 24v	D1	0-10V
	3	39.37 IN	27	2700K		D2	Triac/ELV
	4	46.5 IN	30	3000K		D3	DMX
	CU	Custom	35	3500K		CU	Custom
			40	4000K			
			65	6500K			
			CU	Custom			

TERRA-S DIMENSIONS & MOUNTING

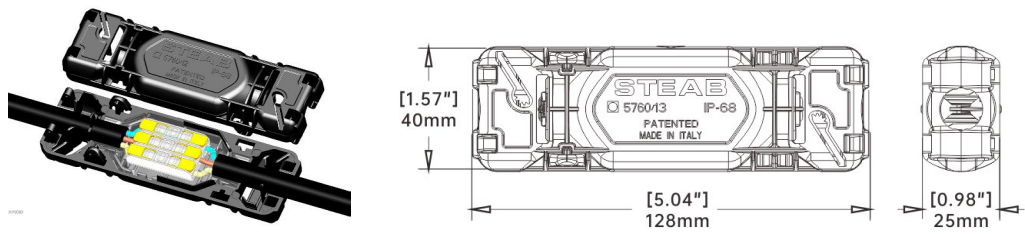


- Remarks:**
- Ensure adequate drain-able sub-base during installation; failure to do so will void the warranty.
 - Ensure that the wire is connected with sealed or gel-filled connectors
 - Use stainless steel screws for mounting the trim.
 - Ensure the top side is level with the ground surface

Cable	Function	Function	Core(EU)	Wire Size
Power	ON/OFF	DC+	Brown	1.0mm ²
		DC-	Blue	1.0mm ²
Power and Data	DMX, RDM	DC+	Brown	1.0mm ²
		DC-	Blue	1.0mm ²
		DMX+	Purple	0.5mm ²
		DMX-	Grey	0.5mm ²
		DMX GND	Yellow	0.5mm ²

Paguro5760/13

Description: 2-Way Gel-Filled IP68 Waterproof 6-Pin Connector





LEDSCAPE OUTDOOR POWER SUPPLY

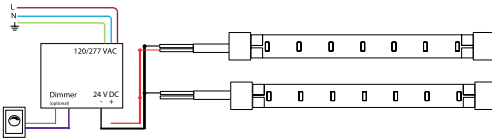
The LEDscape Series of Constant Voltage LED Drivers from offers both cETLus style enclosures. The enclosure has a built-in junction box on both the input and output. These drivers are IP68 and are suitable for all locations. With universal input voltage ranging from 120 to 277VAC, this series of drivers are designed for commercial, industrial and residential applications. Our 5in1 smooth flicker-free linear dimming down to 1% and a wide variety of compatible dimmers, including 0-10V, Magnetic and Low voltage.

PRODUCT HIGHLIGHTS

- **INPUT VOLTAGE:** 120/277 V
- **OUTPUT VOLTAGE:** Variable 18-25V
- **INPUT FREQUENCY:** 50/60 HZ
- **OPERATING TEMP:** -13°F – 104°F
- **DEGREE OF PROTECTION (IP):** IP68
- **DIMMABLE:** to 1%
- **CLASS 2:** All sizes
- **LOAD REQUIREMENTS:** 10%

Note: If using outdoor, verify contractor use included water and moisture tight enclosure. Not direct burial rated.

POWER AND CONNECTION DIAGRAM



POWER SUPPLY = Product Wattage X Length

OPTIONS:

U Set supply voltage of the power supply in Volt
24 Nominal supply voltage of LEDscape in Volt
 Recommended MAC output of power supply 80%

To calculate MAX run distance from Power Supply to LED reference power drop chart : [Here](#).

CHARACTERISTICS

Power	Output Current	Efficiency	Power Factor	Dimensions
30W	1250mA	> 86%	>0.95	7.50" L X 3.62" W X 1.65"H
60W	2600mA	> 86%	>0.95	7.50" L X 3.62" W X 1.65"H
96W	4800mA	> 86%	>0.95	8.50" L X 3.66" W X 1.65"H
120W	5000mA	> 86%	>0.93	10.15" L X 4.85" W X 1.65"H
192W	8000mA	> 86%	>0.93	10.15" L X 4.85" W X 1.65"H
288W	8000mA	> 86%	>0.93	12.44" L X 4.85" W X 1.65" H
384W	16000mA	> 86%	>0.93	12.44" L X 4.85" W X 1.65" H

ORDERING CHART

NOTE: View additional options [here](#).

Ordering Example: PS-24-0-D3-60-U

Series		Output Voltage		Environment		Dimming		Wattage		Voltage Input	
PS	Power supply	24	24V	0	Outdoor/Indoor	ND	Non Dimming	30L	10-30W	U	120/277V
						D3	5 in 1 Dimming	60L	31-60W		
								96L	61-96W		
								120L	97-120W		
								192L	121-192W		
								288L	193-288W		
								384L	289-384W		
								CUL	Custom Output		

DISCLAIMER: The information on these pages are as accurate as possible, however LEDscape or any reseller of LEDscape cannot be held liable for any damages resulting from errors or outdated information. LEDscape reserves the right to modify the information without informing the customers. Check for the latest version on the Internet, the most up to date information will be published on www.ledscape.com. Qualified and Licensed Electrical Contractor must install the product. This product should not be used in applications, devices or systems where incorrect operation of the product may result in personal injury (includes emergency lighting) without written permission from LEDscape. If nevertheless used in such applications, devices or systems LEDscape cannot be held liable for any resulting injury.