

## TERRA-S COLOR CHANGING FIXTURE

The Flex-Driveby LEDscape (IP68) is developed to create diffuse light lines. These casted light lines made from stainless steel (AISI 316L) are walk over and drive over, making them ideal for public applications.

### PRODUCT HIGHLIGHTS

- **BINNING:** ± 50K
- **CRI:** 90
- **IP RATING:** IP67
- **STARTER CABLE:** 6, 19 & 49FT
- **EXPECTED LIFETIME:** L70 > 50,000 hours
- **OPERATING TEMP:** - 40 ° F to 122 ° F
- **RATING:** ETL
- **HOUSING:** Aluminum
- **VOLTAGE:** 24v
- **WARRANTY:** 5 Years
- **DIMMABLE:** 0-10V, Triac, and Custom
- BAA available, consult factory

### AVAILABLE COLORS

- Ultra Warm White 2400K
- Extra Warm White 2700K
- Warm White 3000K
- Cool White 3500K
- Natural White 4000K
- Cold White 6500K
- RGBW
- Custom

### CHARACTERISTICS

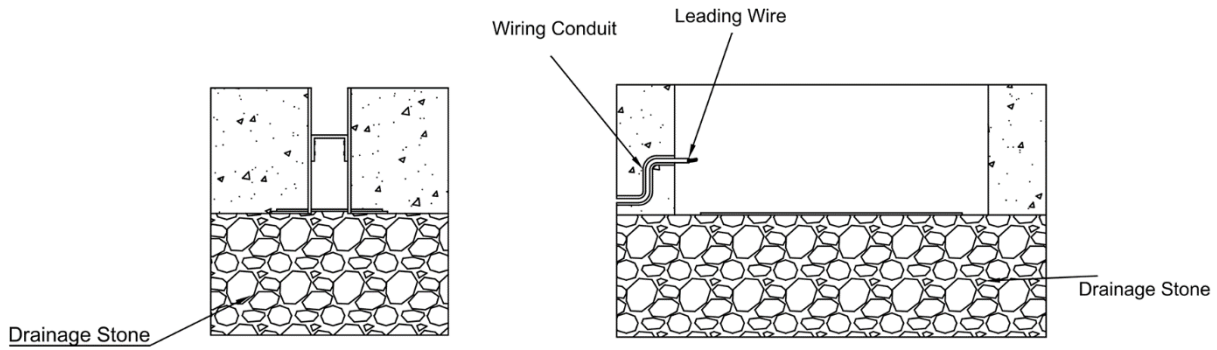
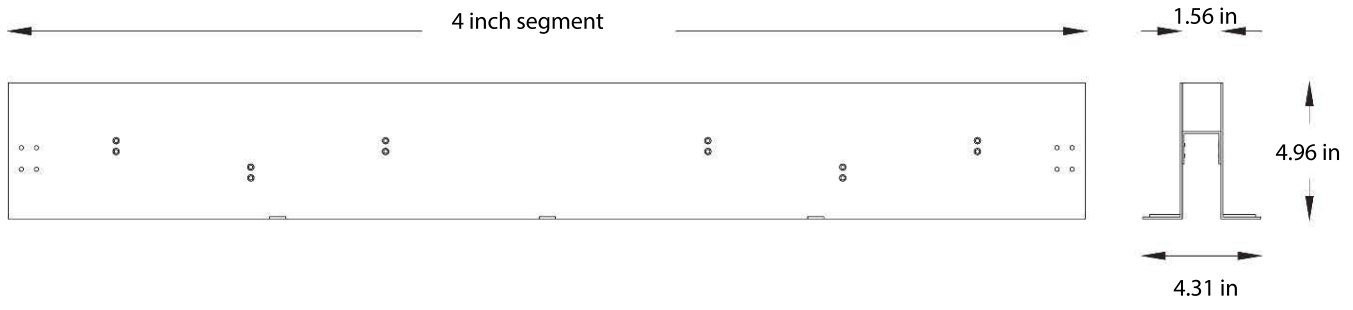
Power	MAX Run Length	Dimming
3.5 w/ FT	16.4 FT	0-10V, Triac/ELV, DMX
<small>Notes: Lumen calculated at 2700K.</small>		

### ORDERING CHART

Example: Terra-S-4-27-24-D1

Product code	Length		Color				Voltage	Dimming	
			24	27	30	35		D1	D2
Terra-S Curved Drive-over	2	23.25 IN	24	2400K	RGBW-27	RGBW 2700K	24 24v	D1	0-10V
	3	39.37 IN	27	2700K	RGBW-30	RGBW 3000K		D2	Triac/ELV
	4	46.5 IN	30	3000K	RGBW-40	RGBW 4000K		D3	DMX
	CU	Custom	35	3500K				CU	Custom
			40	4000K					
			65	6500K					
			CU	Custom					

**TERRA-S DIMENSIONS & MOUNTING**

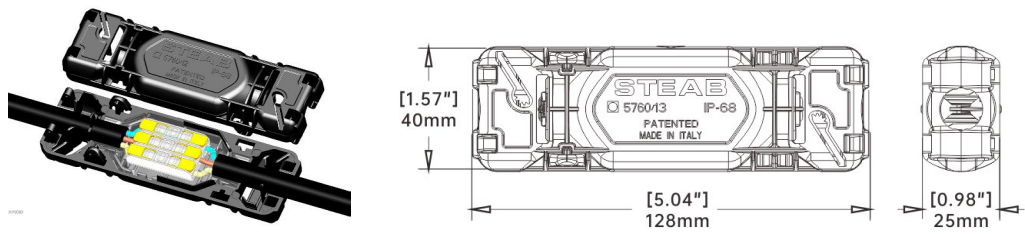


- Remarks:**
- Ensure adequate drain-able sub-base during installation; failure to do so will void the warranty.
  - Ensure that the wire is connected with sealed or gel-filled connectors
  - Use stainless steel screws for mounting the trim.
  - Ensure the top side is level with the ground surface

CableD	imingF	unction	Core(EU)	Wire Size
Power	ON/OFF	DC+	Brown	1.0mm <sup>2</sup>
		DC-	Blue	1.0mm <sup>2</sup>
Power and Data	DMX, RDM	DC+	Brown	1.0mm <sup>2</sup>
		DC-	Blue	1.0mm <sup>2</sup>
		DMX+	Purple	0.5mm <sup>2</sup>
		DMX-	Grey	0.5mm <sup>2</sup>
		DMX GND	Yellow	0.5mm <sup>2</sup>

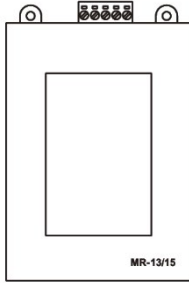
**Paguro5760/13**

**Description:** 2-Way Gel-Filled IP68 Waterproof 6-Pin Connector

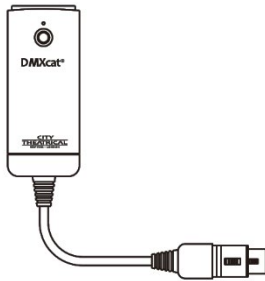


**TERRA-S ACCESSORIES**

---



**Item:** MR-WT25  
**Brand:** MR Technology  
**Function:** DMX Address Writer and Tester  
**Description:** A portable, handheld device supporting DMX512 and RDM protocols, allowing for DMX channel programming, testing, and control with a USB Type-C power supply.



**Item:** DMXcat™  
**Brand:** City Theatrical  
**Function:** RDM Address Writer and Tester  
**Description:** A compact, battery-powered tool for DMX and RDM control via Bluetooth, supporting DMX testing, RDM monitoring, and DIP switch configuration through a smartphone app.



**Item:** DXC-RGB-I-WI  
**Brand:** Nicolaudie, Stick-DE3  
**Function:** DMX Controller  
**Description:** The Stick-DE3 is a compact DMX interface with 1024 DMX channels, offering scene storage and playback.. It supports real-time clock, calender with Sunrise/Sunset triggering.



## LEDSCAPE OUTDOOR POWER SUPPLY

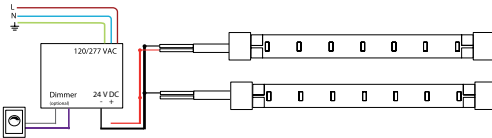
The LEDscape Series of Constant Voltage LED Drivers from offers both cETLus style enclosures. The enclosure has a built-in junction box on both the input and output. These drivers are IP68 and are suitable for all locations. With universal input voltage ranging from 120 to 277VAC, this series of drivers are designed for commercial, industrial and residential applications. Our 5in1 smooth flicker-free linear dimming down to 1% and a wide variety of compatible dimmers, including 0-10V, Magnetic and Low voltage.

### PRODUCT HIGHLIGHTS

- **INPUT VOLTAGE:** 120/277 V
- **OUTPUT VOLTAGE:** Variable 18-25V
- **INPUT FREQUENCY:** 50/60 HZ
- **OPERATING TEMP:** -13°F – 104°F
- **DEGREE OF PROTECTION (IP):** IP68
- **DIMMABLE:** to 1%
- **CLASS 2:** All sizes
- **LOAD REQUIREMENTS:** 10%

Note: If using outdoor, verify contractor use included water and moisture tight enclosure. Not direct burial rated.

### POWER AND CONNECTION DIAGRAM



**POWER SUPPLY** = Product Wattage X Length

24 Nominal supply voltage of LEDscape in Volt  
Recommended MAC output of power supply 80%

To calculate MAX run distance from Power Supply to LED  
reference power drop chart : [Here](#).

### CHARACTERISTICS

Power	Output Current	Efficiency	Power Factor	Dimensions
30W	1250mA	> 86%	>0.95	7.50" L X 3.62" W X 1.65"H
60W	2600mA	> 86%	>0.95	7.50" L X 3.62" W X 1.65"H
96W	4800mA	> 86%	>0.95	8.50" L X 3.66" W X 1.65"H
120W	5000mA	> 86%	>0.93	10.15" L X 4.85" W X 1.65"H
192W	8000mA	> 86%	>0.93	10.15" L X 4.85" W X 1.65"H
288W	8000mA	> 86%	>0.93	12.44" L X 4.85" W X 1.65" H
384W	16000mA	> 86%	>0.93	12.44" L X 4.85" W X 1.65" H

### ORDERING CHART

**NOTE:** View additional options [here](#).

**Ordering Example:** PS-24-0-D3-60L-U

Series		Output Voltage		Environment		Dimming		Wattage		Voltage Input	
PS	Power supply	24	24V	0	Outdoor/Indoor	ND	Non Dimming	30L	10-30W	U	120/277V
						D3	5 in 1 Dimming	60L	31-60W		
								96L	61-96W		
								120L	97-120W		
								192L	121-192W		
								288L	193-288W		
								384L	289-384W		
								CUL	Custom Output		

**DISCLAIMER:** The information on these pages are as accurate as possible, however LEDscape or any reseller of LEDscape cannot be held liable for any damages resulting from errors or outdated information. LEDscape reserves the right to modify the information without informing the customers. Check for the latest version on the Internet, the most up to date information will be published on [www.ledscape.com](http://www.ledscape.com). Qualified and Licensed Electrical Contractor must install the product. This product should not be used in applications, devices or systems where incorrect operation of the product may result in personal injury (includes emergency lighting) without written permission from LEDscape. If nevertheless used in such applications, devices or systems LEDscape cannot be held liable for any resulting injury.



## LEDSCAPE DMX POWER SUPPLIES

The LEDscape Series of Constant Voltage LED Drivers from offers both cETLus style enclosures. The enclosure has a built-in junction box on both the input and output. These drivers are IP68 and are suitable for all locations. With universal input voltage ranging from 120 to 277VAC, this series of drivers are designed for commercial, industrial and residential applications. Our DMX RGBW smooth flicker-free linear dimming down to 1% with any DMX controller. RDM Protocol for ease of on-site programming.

### PRODUCT HIGHLIGHTS

- **INPUT VOLTAGE:** 120/277 V
- **OUTPUT VOLTAGE:** Variable 18-25V
- **INPUT FREQUENCY:** 50/60 HZ
- **OPERATING TEMP:** -13°F – 104°F
- **PROTOCOL:** DMX512 RDM
- **DEGREE OF PROTECTION (IP):** IP68
- **DIMMABLE:** to 1%
- **CLASS 2:** All sizes
- **LOAD REQUIREMENTS:** 10%

Note: If using outdoor, verify contractor use included water and moisture tight enclosure. Not direct burial rated.

### POWER AND CONNECTION DIAGRAM

**POWER SUPPLY** = Product Wattage X Length X 120 X  $\left[ \frac{U \text{ Supply}}{24} \right]$

**OPTIONS:**

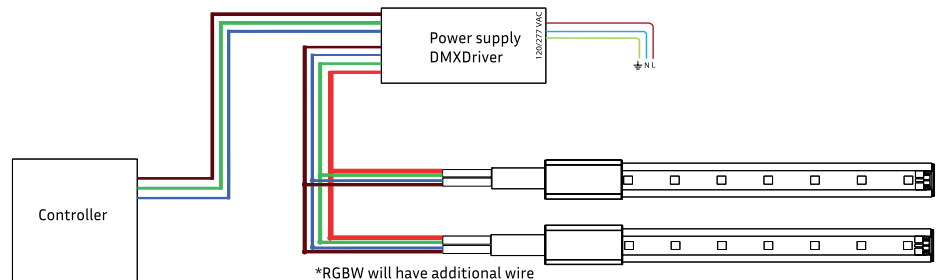
U Set supply voltage of the power supply in Volt  
24 Nominal supply voltage of LEDscape in Volt  
Recommended MAC output of power supply 80%

To calculate MAX run distance from Power Supply to LED reference power drop chart : [Here](#).

Note: If using outdoor, verify contractor use included water and moisture tight enclosure. Not direct burial rated.

### CHARACTERISTICS

Power	Output Current	Efficiency	Power Factor	Dimensions
120W	4100mA	> 95%	>0.95	9.50" L X 3.62" W X 1.65" H
300W	8200mA	> 95%	>0.95	12.5" L X 10.25" W X 1.81" H



### ORDERING CHART

**NOTE:** View additional options [here](#).

**Ordering Example:** PS-24-0-DMX-120-U

Series		Output Voltage		Environment		Dimming		Wattage		Voltage Input	
PS	Power Supply	24	24V	0	Outdoor/Indoor	DMX	DMX 512	120	60-120W	U	120/277V
								300	121-300W		
								CU	Custom Output		

**Notes:**

Power Supplies should still be in outdoor enclosure if direct buried application. LEDscape Lighting does NOT conduct start-up and/or programming. Advise to hire DMX professional if needed.

**DISCLAIMER:** The information on these pages are as accurate as possible, however LEDscape or any reseller of LEDscape cannot be held liable for any damages resulting from errors or outdated information. LEDscape reserves the right to modify the information without informing the customers. Check for the latest version on the Internet, the most up to date information will be published on [www.ledscape.com](http://www.ledscape.com). Qualified and Licensed Electrical Contractor must install the product. This product should not be used in applications, devices or systems where incorrect operation of the product may result in personal injury (includes emergency lighting) without written permission from LEDscape. If nevertheless used in such applications, devices or systems LEDscape cannot be held liable for any resulting injury.



## LEDSCAPE CCT POWER SUPPLIES

The LEDscape Series of Constant Voltage LED Drivers from offers both cETLus style enclosures. The enclosure has a built-in junction box on both the input and output. These drivers are IP68 and are suitable for all locations. With universal input voltage ranging from 120 to 277VAC, this series of drivers are designed for commercial, industrial and residential applications. Our smooth flicker-free linear dimming down to 1% with most Dimmers. Pick from Dim to Warm OR CCT Tunable.

### PRODUCT HIGHLIGHTS

- **INPUT VOLTAGE:** 120/277 V
- **OUTPUT VOLTAGE:** Variable 18-25V
- **INPUT FREQUENCY:** 50/60 HZ
- **OPERATING TEMP:** -13°F – 104°F
- **CCT TUNABLE:** Triac, 0-10V
- **WARM DIM:** Triac, 0-10V
- **DEGREE OF PROTECTION (IP):** IP68
- **DIMMABLE:** to 1%
- **CLASS 2:** All sizes
- **LOAD REQUIREMENTS:** 10%

Note: If using outdoor, verify contractor use included water and moisture tight enclosure. Not direct burial rated.

### POWER AND CONNECTION DIAGRAM

$$\text{POWER SUPPLY} = \text{Product Wattage} \times \text{Length} \times 120 \times \left[ \frac{U \text{ Supply}}{24} \right]$$

**OPTIONS:**

U Set supply voltage of the power supply in Volt  
24 Nominal supply voltage of LEDscape in Volt  
Recommended MAC output of power supply 80%

To calculate MAX run distance from Power Supply to LED reference power drop chart : [Here](#).

Note: If using outdoor, verify contractor use included water and moisture tight enclosure. Not direct burial rated.

### CHARACTERISTICS

Power	Output Current	Efficiency	Power Factor	Dimensions
30W	1250mA	> 96%	>0.95	7.50" L X 54.05" W X 1.65"H
96W	4800mA	> 96%	>0.95	8.50" L X 4.05" W X 1.65"H
150W	6100mA	> 86%	>0.95	12.15" L X 4.85" W X 1.65"H

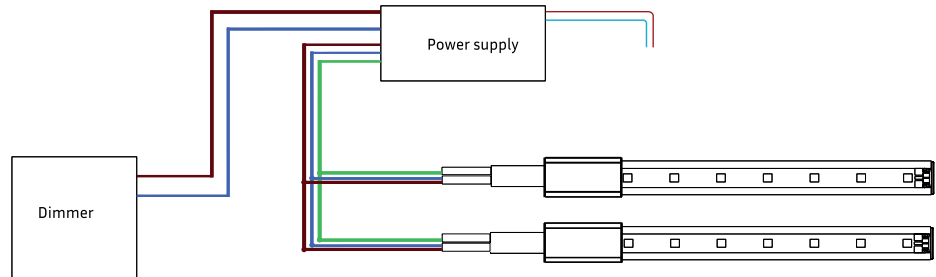


Illustration only, setup may differ. consult install instructions

### ORDERING CHART

**NOTE:** View additional options [here](#).

**Ordering Example:** PS-24-0-CCT-60-U

Series		Output Voltage		Environment		Dimming		Wattage		Voltage Input	
PS	Power Supply	24	24V	0	Outdoor/Indoor	CCT	Tunable White & Warm Dimming	30	30W	U	120/277V
								96	31-96W		
								150	97-150W		
								CU	Custom Output		

**DISCLAIMER:** The information on these pages are as accurate as possible, however LEDscape or any reseller of LEDscape cannot be held liable for any damages resulting from errors or outdated information. LEDscape reserves the right to modify the information without informing the customers. Check for the latest version on the Internet, the most up to date information will be published on [www.ledscape.com](http://www.ledscape.com). Qualified and Licensed Electrical Contractor must install the product. This product should not be used in applications, devices or systems where incorrect operation of the product may result in personal injury (includes emergency lighting) without written permission from LEDscape. If nevertheless used in such applications, devices or systems LEDscape cannot be held liable for any resulting injury.