



LIGHT BAR IN-GROUND FIXTURE

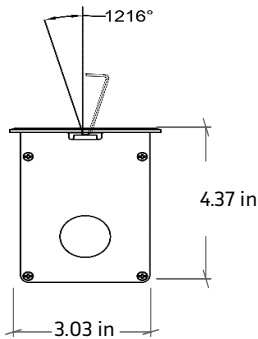
The Lightbar Color Changing In-ground is linear White light bar designed for Wall Washing, Grazing, Cove & Flood illumination for both interior and exterior applications. Select from 12", 19", 36" & 48" lengths. Our fixtures have integrated power supplies. Designed in the United States.

PRODUCT HIGHLIGHTS

- **BINNING:** ± 50K
- **CRI:** 90
- **IP RATING:** IP67
- **STARTER CABLE:** 6, 19 & 49FT
- **EXPECTED LIFETIME:** L70 > 50,000 hours
- **OPERATING TEMP:** - 40 ° F to 122 ° F
- **RATING:** ETL
- **HOUSING:** Aluminum
- **VOLTAGE:** 120/277, 24v
- **WARRANTY:** 5 Years
- **DIMMABLE:** 0-10V, Triac, and Custom
- **BAA** available, consult factory

AVAILABLE COLORS

- Extra Warm White 1800K
- Ultra Warm White 2200K
- Extra Warm White 2700K
- Warm White 3000K
- Cool White 3500K
- Natural White 4000K
- Custom



CHARACTERISTICS

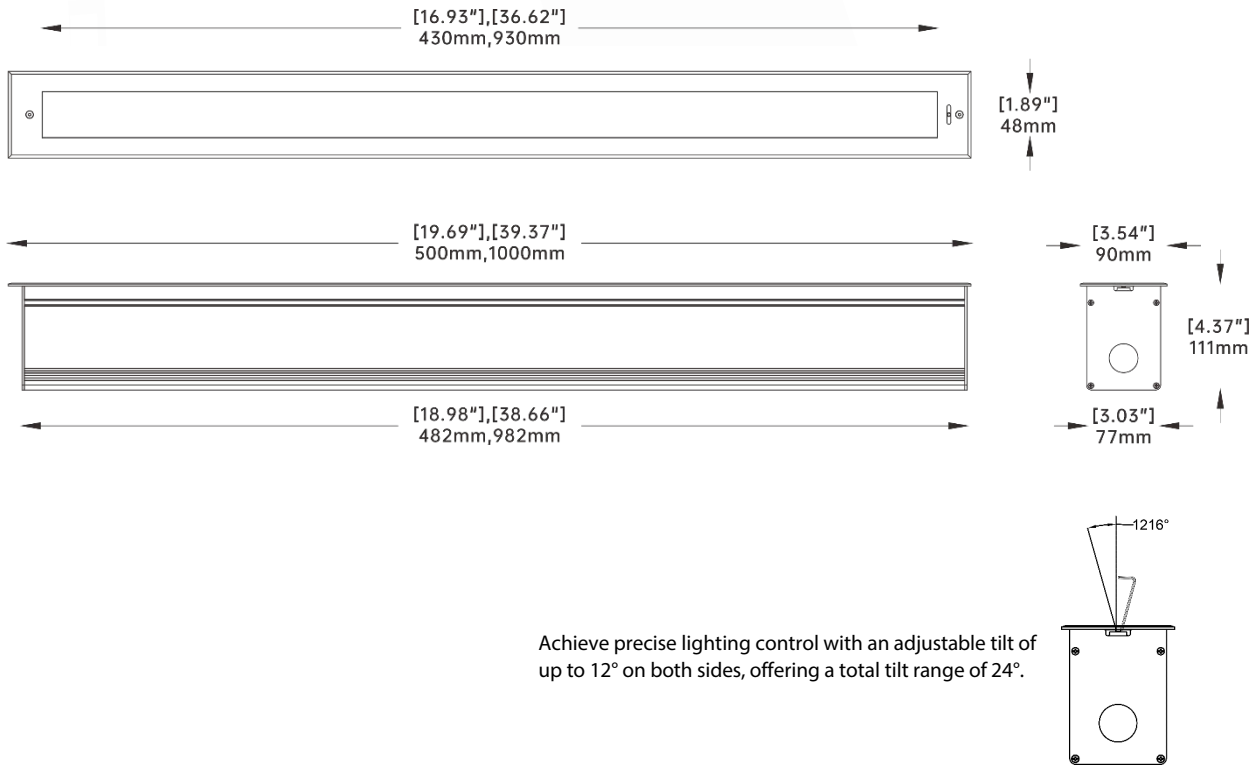
Power	Lumen	MAX Run Length	Dimming
19 inch 18w	1272 lm	112 ft @ 120V / 160 ft @ 277V	0-10V/DMX
39 inch 36w	2544 lm		
<small>Notes: Lumen calculated at 3000K, 15 degree.</small>			

ORDERING CHART

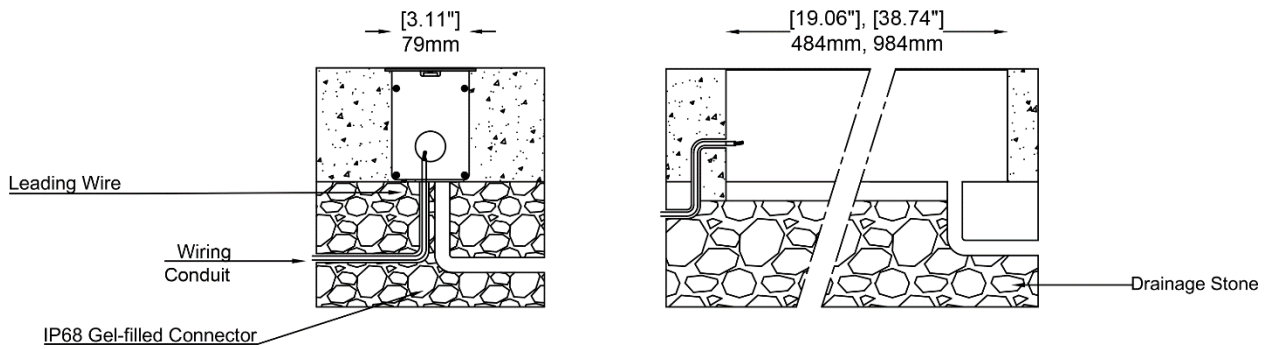
Example: LB-ig-19-30-15-U-D1

Model	Length		Color		Optics		Voltage		Dimming	
	Length	Power	Color	Temp	Beam	Temp	Power	Temp	Dimming	Temp
LB-ig	19	19 inch	18	1800k	15	15°	U	120/277v	D1	0-10V
	36	36 inch	22	2200k	25	25°	24	24v	D2	Triac/ELV
	CU	Custom	27	2700k	40	40°			CU	Custom
			30	3000k	2055	20°x 55°				
			35	3500k	CU	Custom				
			40	4000k						
			50	5000k						
			60	6000k						
		CU	Custom							

DIMENSIONS



INSTALL DIAGRAM



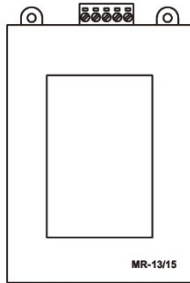
Cut-out Dimension: 79mm x 484mm /984mm

Remarks:

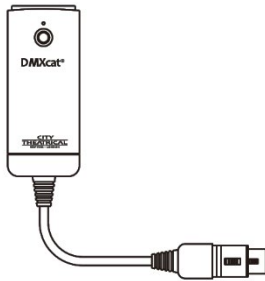
- Ensure adequate drainage during installation; failure to do so will void the warranty.
- Ensure that the wire is connected with sealed or gel-filled connectors
- Use stainless steel screws for mounting the trim.
- Ensure the top side is level with the ground surface

Note: Actual wiring and installation is dependent on site conditions. Please consult factory for details.

LB-IG ACCESSORIES



Item: MR-WT25
Brand: MR Technology
Function: DMX Address Writer and Tester
Description: A portable, handheld device supporting DMX512 and RDM protocols, allowing for DMX channel programming, testing, and control with a USB Type-C power supply.



Item: DMXcat™
Brand: City Theatrical
Function: RDM Address Writer and Tester
Description: A compact, battery-powered tool for DMX and RDM control via Bluetooth, supporting DMX testing, RDM monitoring, and DIP switch configuration through a smartphone app.



Item: DXC-RGB-I-WI
Brand: Nicolaudie, Stick-DE3
Function: DMX Controller
Description: The Stick-DE3 is a compact DMX interface with 1024 DMX channels, offering scene storage and playback.. It supports real-time clock, calender with Sunrise/Sunset triggering.



LEDSCAPE OUTDOOR POWER SUPPLY

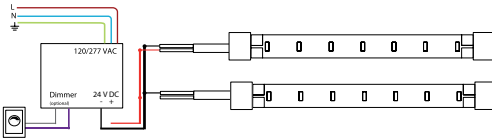
The LEDscape Series of Constant Voltage Class 2 LED Drivers from offers both cETLus style enclosures. The enclosure has a built-in junction box on both the input and output. These drivers are IP68 and are suitable for all locations. With universal input voltage ranging from 120 to 277VAC, this series of drivers are designed for commercial, industrial and residential applications. Our 5in1 smooth flicker-free linear dimming down to 1% and a wide variety of compatible dimmers, including 0-10V, Magnetic and Low voltage.

PRODUCT HIGHLIGHTS

- **INPUT VOLTAGE:** 120/277 V
- **OUTPUT VOLTAGE:** Variable 18-25V
- **INPUT FREQUENCY:** 50/60 HZ
- **OPERATING TEMP:** -13°F – 104°F
- **DEGREE OF PROTECTION (IP):** IP68
- **DIMMABLE:** to 1%
- **LOAD REQUIREMENTS:** 10%

Note: If using outdoor, verify contractor use included water and moisture tight enclosure. Not direct burial rated.

POWER AND CONNECTION DIAGRAM



POWER SUPPLY = Product Wattage X Length

24 Nominal supply voltage of LEDscape in Volt
Recommended MAC output of power supply 80%

To calculate MAX run distance from Power Supply to LED reference power drop chart : [Here](#).

CHARACTERISTICS

Power	Output Current	Efficiency	Power Factor	Dimensions
30W	1250mA	> 86%	>0.95	7.50" L X 3.62" W X 1.65"H
60W	2600mA	> 86%	>0.95	7.50" L X 3.62" W X 1.65"H
96W	4800mA	> 86%	>0.95	8.50" L X 3.66" W X 1.65"H
120W	5000mA	> 86%	>0.93	10.15" L X 4.85" W X 1.65"H
192W	8000mA	> 86%	>0.93	10.15" L X 4.85" W X 1.65"H
288W	8000mA	> 86%	>0.93	12.44" L X 4.85" W X 1.65" H
384W	16000mA	> 86%	>0.93	12.44" L X 4.85" W X 1.65" H

ORDERING CHART

NOTE: View additional options [here](#).

Ordering Example: PS-24-0-D3-60L-U

Series		Output Voltage		Environment		Dimming		Wattage		Voltage Input	
PS	Power supply	24	24V	0	Outdoor/Indoor	ND	Non Dimming	30L	10-30W	U	120/277V
						D3	5 in 1 Dimming	60L	31-60W		
								96L	61-96W		
								120L	97-120W		
								192L	121-192W		
								288L	193-288W		
								384L	289-384W		
								CUL	Custom Output		

DISCLAIMER: The information on these pages are as accurate as possible, however LEDscape or any reseller of LEDscape cannot be held liable for any damages resulting from errors or outdated information. LEDscape reserves the right to modify the information without informing the customers. Check for the latest version on the Internet, the most up to date information will be published on www.ledscape.com. Qualified and Licensed Electrical Contractor must install the product. This product should not be used in applications, devices or systems where incorrect operation of the product may result in personal injury (includes emergency lighting) without written permission from LEDscape. If nevertheless used in such applications, devices or systems LEDscape cannot be held liable for any resulting injury.