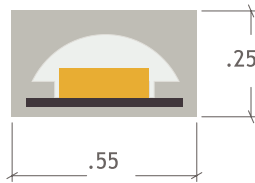


## LEDSCAPE FLEX TOP COLOR CHANGING IP67

The Flex Strip Top -C LED is a high quality, flexible LED strip with a unique coextrusion technology. The combination of high quality and exceptional flexibility, allows for an endless range of indoor and outdoor applications. Combine with either the IP40 or IP67 solution.

### PRODUCT HIGHLIGHTS

- **BINNING:** ±50K
- **CRI:** 90+
- **EXPECTED LIFETIME:** L70 > 50,000 hours
- **OPERATING TEMP:** 22°F – 131°F (-30°C – 55°C)
- **BENDING RADIUS:** 1.18 in
- **RATING:** UL
- **OPERATING VOLTAGE:** 24V, constant voltage
- **WARRANTY:** 5 year
- **FEATURES:** Dimmable, Plug & Play, Assorted colors, Accessories available, Effective heat dissipation, Excellent lumen/watt ratio, very flexible, custom output, custom colors.



### AVAILABLE COLORS

- RGB/ RGBW
- TW 2700K-6000K
- Custom

### CHARACTERISTICS

| Power |           | Dimensions  | Length Inc. <sup>1</sup> | Max Run Length <sup>2</sup> | Dimming                |
|-------|-----------|-------------|--------------------------|-----------------------------|------------------------|
| RGB   | 4.40 w/ft | 0.55 x 0.25 | 3.94 in                  | 16 ft                       | DMX                    |
| RGBW  | 5.85 w/ft |             |                          |                             |                        |
| TWW   | 4.96 w/ft |             | 1.98 in                  |                             | DMX, Warm-Dim, Tunable |
| TW    | 4.96 w/ft |             |                          |                             |                        |

**Notes:**

- Length Increments:** Refers to the Strip's cuttable segments. Example: If 1ft Power (P), you will cut 9.84 in or 14.76 in.
- Max Run Length:** Refers to the Strip's total run length from connector to end, including interconnected lengths. Example: if you are ordering 60 Ft. of Power, you will need 4 EA 16 ft lengths.

MAX. connection length between -4°F and -22°F is 1/3 of listed above. Lumen calculated at 2700K, please request individual data sheets if needed. Circuits with LEDscape product must have surge protection to qualify for 5 year warranty. LEDscape reserves the right to modify the information above without notice.

### ORDERING CHART

Example: 16-Flex-T-PCB-RGB

| Length   | LED Stock Code                         | Series | Color  |              |
|--|--|--------|--------|--------------|
| 16 ft<br><small>NOTE: Refer to Max Run lengths. If total exceeds, you will receive multiple pieces.<br/>Example: 32 ft = (2) 16 ft</small> | FLEX-T<br>Top LED Strip<br>(IP65/IP67) | PCB    | RGB    | RGB          |
|  |  |        | RGBW27 | RGBW 2700K   |
|  |  |        | RGBW30 | RGBW 3000K   |
|  |  |        | RGBW40 | RGBW 4000K   |
|  |  |        | TWW    | 1900-2400k   |
|  |  |        | TW     | 2700-6000K   |
|  |  |        | CU     | Custom Color |
|  |  |        |        |              |

**Notes:**

Product sold PER FOOT. Stock code may differ from UL/ETL certification, consult factory if required.

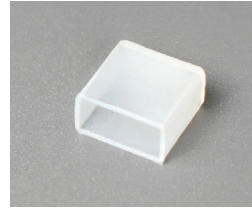
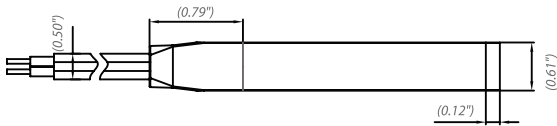
## FLEX STRIP TOP CONNECTORS

### FACTORY INSTALLED - IP67 DIMENSIONS

Part #: Flex-T-Conn67

Cord Length: 6" in

Degree of Protection: IP67



### EC END CAPCAP IP40/65

Part #: Flex-T-EC10 (RGB/TW)

Part #: Flex-T-EC12 (RGBW)

Degree of Protection: IP65



### SADDLE CLIP

Part #: Flex-T-SC10 (RGB)

Part #: Flex-T-SC12 (RGBW)

\*ships in pkg of 10



### GLUE

Part #: Flex-T-C-Glue

Degree of Protection: IP65



### PLASTIC CHANNEL (NO LENS)

Part #: 3-Flex-T-CC110(RGB/TW)

Part #: 3-Flex-T-CC12(RGBW)



### ALUMINUM CHANNEL (NO LENS)

Part #: 3-Flex-T-AC10(RGB/TW)

Part #: 3-Flex-T-AC12(RGBW)

**Note:** IP67 Connector ships factory assembled with corresponding end cap. Customer may elect to cut and use IP40/65 end cap in the field, but installed assumes all responsibility for correct waterproofing and does not fall under factory warranty.

## POPULAR CHANNELS



### SURFACE SLIM S17

Part #: 3-WV-S-D-CP

Dim: 0.80 x 0.40

Degree of Protection: IP40

Output: 200-1875 lm/ft

Spec sheet : [Here](#)



### L20

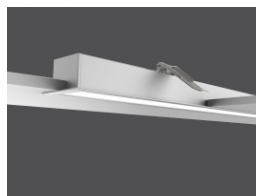
Part #: 3-L20-S-D-C

Dim: 0.79 x 0.75

Degree of Protection: IP40

Output: 200-600 lm/ft

Spec sheet : [Here](#)



### DESIGNER DR55

Part #: 3-DR55-S-D-CP

Dim: 0.78 x 0.22

Degree of Protection: IP40

Output: 823 lm/ft

Spec sheet : [Here](#)



### ROUND CORNER RC16

Part #: 3-RC16-S-D-CP

Dim: .63 x .63

Degree of Protection: IP20-IP65

Output: 200-875 lm/ft

Spec sheet : [Here](#)

View all channel options [here](#).



## LEDSCAPE DMX POWER SUPPLIES

The LEDscape Series of Constant Voltage Class 2 LED Drivers from offers both cETLus style enclosures. The enclosure has a built-in junction box on both the input and output. These drivers are IP68 and are suitable for all locations. With universal input voltage ranging from 120 to 277VAC, this series of drivers are designed for commercial, industrial and residential applications. Our DMX RGBW smooth flicker-free linear dimming down to 1% with any DMX controller. RDM Protocol for ease of on-site programming.

### PRODUCT HIGHLIGHTS

- **INPUT VOLTAGE:** 120/277 V
- **OUTPUT VOLTAGE:** Variable 18-25V
- **INPUT FREQUENCY:** 50/60 HZ
- **OPERATING TEMP:** -13°F – 104°F
- **PROTOCOL:** DMX512 RDM
- **DEGREE OF PROTECTION (IP):** IP68
- **DIMMABLE:** to 1%
- **CLASS 2:** All sizes
- **LOAD REQUIREMENTS:** 10%

Note: If using outdoor, verify contractor use included water and moisture tight enclosure. Not direct burial rated.

### POWER AND CONNECTION DIAGRAM

**POWER SUPPLY** = Product Wattage X Length

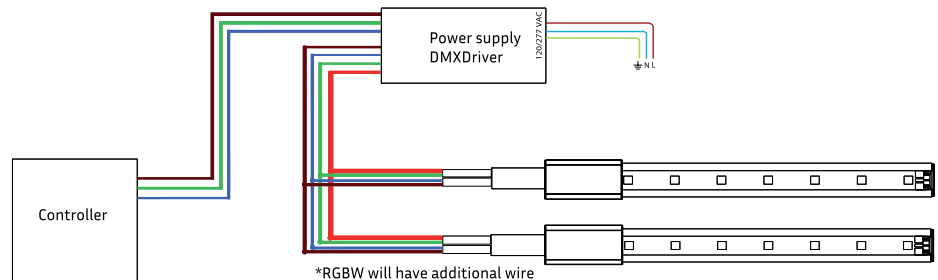
24 Nominal supply voltage of LEDscape in Volt  
Recommended MAC output of power supply 80%

To calculate MAX run distance from Power Supply to LED reference power drop chart : [Here](#).

Note: If using outdoor, verify contractor use included water and moisture tight enclosure. Not direct burial rated.

### CHARACTERISTICS

| Power | Output Current | Efficiency | Power Factor | Dimensions                   |
|-------|----------------|------------|--------------|------------------------------|
| 120W  | 4100mA         | > 95%      | >0.95        | 9.50" L X 3.62" W X 1.65" H  |
| 300W  | 8200mA         | > 95%      | >0.95        | 12.5" L X 10.25" W X 1.81" H |



### ORDERING CHART

**NOTE:** View additional options [here](#).

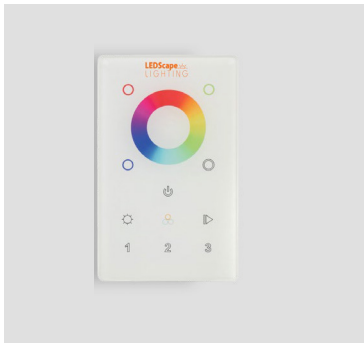
**Ordering Example:** PS-24-0-DMX-120-U

| Series |              | Output Voltage |     | Environment |                | Dimming |         | Wattage |               | Voltage Input |          |
|--------|--------------|----------------|-----|-------------|----------------|---------|---------|---------|---------------|---------------|----------|
| PS     | Power Supply | 24             | 24V | 0           | Outdoor/Indoor | DMX     | DMX 512 | 120     | 60-120W       | U             | 120/277V |
|        |              |                |     |             |                |         |         | 300     | 121-300W      |               |          |
|        |              |                |     |             |                |         |         | CU      | Custom Output |               |          |

**Notes:**

Power Supplies should still be in outdoor enclosure if direct buried application. LEDscape Lighting does NOT conduct start-up and/or programming. Advise to hire DMX professional if needed.

**DISCLAIMER:** The information on these pages are as accurate as possible, however LEDscape or any reseller of LEDscape cannot be held liable for any damages resulting from errors or outdated information. LEDscape reserves the right to modify the information without informing the customers. Check for the latest version on the Internet, the most up to date information will be published on [www.ledscape.com](http://www.ledscape.com). Qualified and Licensed Electrical Contractor must install the product. This product should not be used in applications, devices or systems where incorrect operation of the product may result in personal injury (includes emergency lighting) without written permission from LEDscape. If nevertheless used in such applications, devices or systems LEDscape cannot be held liable for any resulting injury.



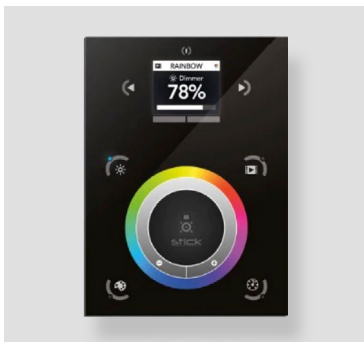
## LEDSCAPE DMX CONTROLLERS

LEDscape Wall Color Controller allows for smooth color control and dimming all in one. The Wall Mounted Version fits in a standard switch box. It operates with all DMX 512 Drivers and decoders. You can set up to 3 Zones per controller and does not have any preset settings. 12-36V compatible.

### ORDERING CHART

Ordering Example: DXC-DMX-I-W

| Series |                | Type |         | Environment |        | Control |              |
|--------|----------------|------|---------|-------------|--------|---------|--------------|
| DXC    | DMX Controller | DMX  | DMX 512 | I           | Indoor | W       | Wall Mounted |



## ADVANCED COLOR CONTROLLER

LEDscape Wall Color Controller by Nicolaudie is aimed at architectural lighting installations requiring an advanced level of programming (color changing effects, specific colors etc). The controller provides a clean and user-friendly panel. Featuring an on/off button, 6 scene buttons and a color wheel, the controller is ideal for hotels, homes and public environments.

With 1024 DMX channels, Wi-Fi for remote network control and scene calendar triggers USB programmable from a PC or Mac, up to 10 zone, 36 scenes can be stored within the controller and directly recalled via 6 touch sensitive buttons.

### ORDERING CHART

Ordering Example: DXC-Pro-RGBW-I

| Series  |                             | COLOR |     | Environment |        |
|---------|-----------------------------|-------|-----|-------------|--------|
| DXC-Pro | Professional DMX Controller | RGBW  | RGB | I           | Indoor |

LEDscape Lighting does NOT conduct start-up and/or programming. Advise to hire DMX professional if needed. The Pro DMX Controller does require programming on-site.

**DISCLAIMER:** The information on these pages are as accurate as possible, however LEDscape or any reseller of LEDscape cannot be held liable for any damages resulting from errors or outdated information. LEDscape reserves the right to modify the information without informing the customers. Check for the latest version on the Internet, the most up to date information will be published on [www.ledscape.com](http://www.ledscape.com). Qualified and Licensed Electrical Contractor must install the product. This product should not be used in applications, devices or systems where incorrect operation of the product may result in personal injury (includes emergency lighting) without written permission from LEDscape. If nevertheless used in such applications, devices or systems LEDscape cannot be held liable for any resulting injury.



## LEDSCAPE CCT POWER SUPPLIES

The LEDscape Series of Constant Voltage Class 2 LED Drivers from offers both cETLus style enclosures. The enclosure has a built-in junction box on both the input and output. These drivers are IP68 and are suitable for all locations. With universal input voltage ranging from 120 to 277VAC, this series of drivers are designed for commercial, industrial and residential applications. Our smooth flicker-free linear dimming down to 1% with most Dimmers. Pick from Dim to Warm OR CCT Tunable.

### PRODUCT HIGHLIGHTS

- **INPUT VOLTAGE:** 120/277 V
- **OUTPUT VOLTAGE:** Variable 18-25V
- **INPUT FREQUENCY:** 50/60 HZ
- **OPERATING TEMP:** -13°F – 104°F
- **CCT TUNABLE:** Triac, 0-10V
- **WARM DIM:** Triac, 0-10V
- **DEGREE OF PROTECTION (IP):** IP68
- **DIMMABLE:** to 1%
- **CLASS 2:** All sizes
- **LOAD REQUIREMENTS:** 10%

Note: If using outdoor, verify contractor use included water and moisture tight enclosure. Not direct burial rated.

### POWER AND CONNECTION DIAGRAM

$$\text{POWER SUPPLY} = \text{Product Wattage} \times \text{Length} \times 120 \times \left[ \frac{U \text{ Supply}}{24} \right]$$

**OPTIONS:**

U Set supply voltage of the power supply in Volt  
24 Nominal supply voltage of LEDscape in Volt  
Recommended MAC output of power supply 80%

To calculate MAX run distance from Power Supply to LED reference power drop chart : [Here](#).

Note: If using outdoor, verify contractor use included water and moisture tight enclosure. Not direct burial rated.

### CHARACTERISTICS

| Power | Output Current | Efficiency | Power Factor | Dimensions                  |
|-------|----------------|------------|--------------|-----------------------------|
| 30W   | 1250mA         | > 96%      | >0.95        | 7.50" L X 54.05" W X 1.65"H |
| 96W   | 4800mA         | > 96%      | >0.95        | 8.50" L X 4.05" W X 1.65"H  |
| 150W  | 6100mA         | > 86%      | >0.95        | 12.15" L X 4.85" W X 1.65"H |

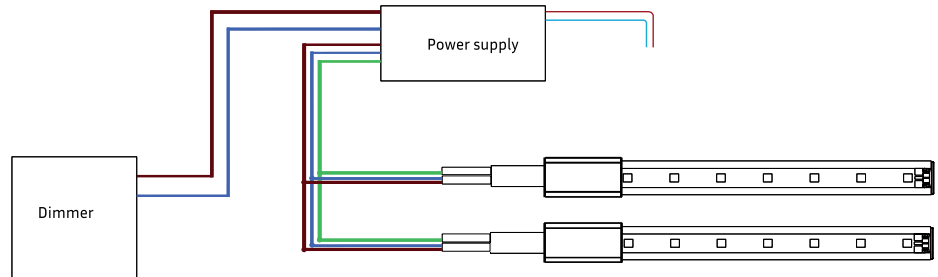


Illustration only, setup may differ. consult install instructions

### ORDERING CHART

**NOTE:** View additional options [here](#).

**Ordering Example:** PS-24-0-CCT-60-U

| Series |              | Output Voltage |     | Environment |                | Dimming |                              | Wattage |               | Voltage Input |          |
|--------|--------------|----------------|-----|-------------|----------------|---------|------------------------------|---------|---------------|---------------|----------|
| PS     | Power Supply | 24             | 24V | 0           | Outdoor/Indoor | CCT     | Tunable White & Warm Dimming | 30      | 30W           | U             | 120/277V |
|        |              |                |     |             |                |         |                              | 96      | 31-96W        |               |          |
|        |              |                |     |             |                |         |                              | 150     | 97-150W       |               |          |
|        |              |                |     |             |                |         |                              | CU      | Custom Output |               |          |

**DISCLAIMER:** The information on these pages are as accurate as possible, however LEDscape or any reseller of LEDscape cannot be held liable for any damages resulting from errors or outdated information. LEDscape reserves the right to modify the information without informing the customers. Check for the latest version on the Internet, the most up to date information will be published on [www.ledscape.com](http://www.ledscape.com). Qualified and Licensed Electrical Contractor must install the product. This product should not be used in applications, devices or systems where incorrect operation of the product may result in personal injury (includes emergency lighting) without written permission from LEDscape. If nevertheless used in such applications, devices or systems LEDscape cannot be held liable for any resulting injury.