

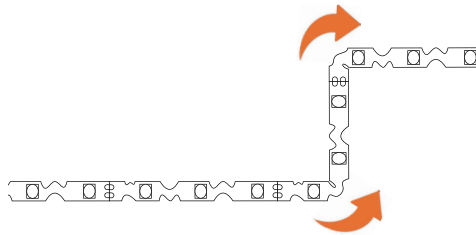


LEDSCAPE FLEX PCB MULTI BEND IP20

The LEDscape PCB Multi LED strip (IP20) is a high quality, flexible LED strip equipped with 3M double sided tape. Thanks to its small dimensions the PCB LED strip is ideal for usage in small (indoor) spaces. This LED strip allows both top and side bending.

PRODUCT HIGHLIGHTS

- **BINNING:** ±50K
- **CRI:** >90
- **EXPECTED LIFETIME:** L70 > 50,000 hours
- **OPERATING TEMP:** 22°F – 131°F (-30°C – 55°C)
- **DEGREE OF PROTECTION:** IP20
- **Rating:** UL
- **BENDING RADIUS:** 0.78 in
- **CORD LENGTH EXPECTED:** 3 ft
- **OPERATING VOLTAGE:** 24V, constant voltage
- **WARRANTY:** 5 year
- **FEATURES:** Dimmable, Plug & Play, Assorted colors, Accessories available, Effective heat dissipation, Excellent lumen/watt ratio, very flexible, custom output, custom colors.



CHARACTERISTICS

	Power	Length Increments ¹	Max Run Length ²	Dimming
P	1.46 w/ft	1.97 in	16.4 ft	Low Volt/0-10v
HP	2.92 w/ft	3.93 in		

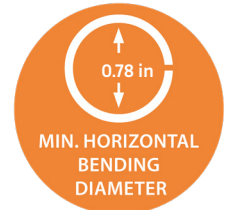
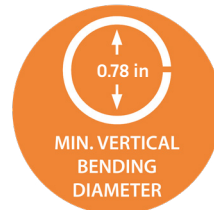
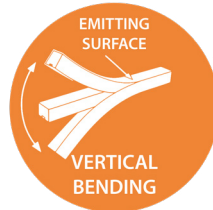
Notes:

- Length Increments:** Refers to the Strip's cuttable segments. Example; if you need 9 inch of Power Strip, you'll cut 7.88inch or 9.85 inch
- Max Run Length:** Refers to the Strip's total run lengths from the connector to the end, including interconnected lengths. Example; If ordering 30 FT of you will receive 2 EA 16 FT Lengths.

MAX. connection length between -4 °F and -22 F is 1/3 of listed above. Lumen calculated at 2700K, please request individual datasheets if needed. LEDscape reserves the right to modify the information above without notice.

AVAILABLE COLORS

- Extra Warm White 2700K
- Warm White 3000K
- Cool White 3500K
- Natural White 4000K
- Daylight White 5000K
- Cold White 6500K
- Custom



ORDERING CHART

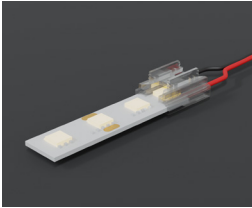
Example: 16-Flex-PCB-M-P-30-20

Length	LED Stock Code	Series	Lumen		Color	
16 ft <small>NOTE: Refer to Max Run lengths. If total exceeds, you will receive multiple pieces. Example: 32 ft = (2) 16 ft</small>	FLEX LED Strip	PCB-M PCB Multi bend (Indoor IP20)	1.4	143 lm/ft	27	2700K
			2.9	283 lm/ft	30	3000K
					35	3500K
					40	4000k
					50	5000k
					60	6000k
					CU	Custom Color

Notes:

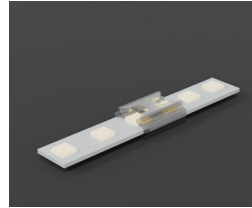
Product Ships in 16.4ft reels. Stock code may differ from UL/ETL certification, consult factory if required.

FLEX PCB CONNECTORS



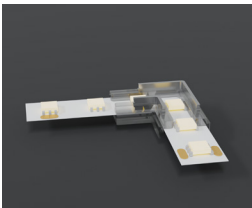
CONNECTOR SET

Part #: Flex-PCB-C-Conn8
Cord Length: 6" in
Degree of Protection: IP20



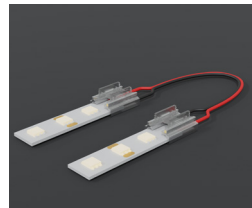
BOARD TO BOARD COUPLER

Part #: Flex-PCB-C-Coupler8
Degree of Protection: IP20



BOARD TO BOARD L COUPLER

Part #: Flex-PCB-C-Coupler8-L
Degree of Protection: IP20



BOARD TO BOARD JUMPER

Part #: Flex-PCB-C-Jmp9
Cord Length: 6" in
Degree of Protection: IP20

POPULAR CHANNELS



WAVEY (WV)

Part #: 3-WV-S-D-CP
Dim: 0.70 x 0.30
Degree of Protection: IP40
Output: 200-1463 lm/ft
Spec sheet : [Here](#)



L20

Part #: 3-L20-S-D-C
Dim: 0.79 x 0.75
Degree of Protection: IP40
Output: 200-600 lm/ft
Spec sheet : [Here](#)



SURFACE SLIM S17

Part #: 3-S17-S-D-CP
Dim: 0.80 x 0.40
Degree of Protection: IP40
Output: 200-1875 lm/ft
Spec sheet : [Here](#)



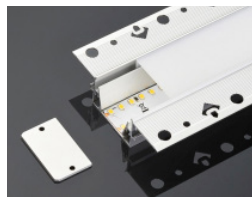
GRAZER SG

Part #: 3-SG-S-NB-CP
Dim: 0.67x 0.78
Degree of Protection: IP40
Output: 200-875 lm/ft
Spec sheet : [Here](#)



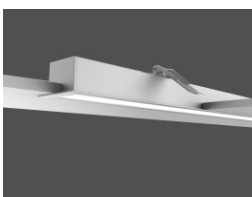
STAIR INDIRECT SI29

Part #: 3-SI29-S-D-CP
Dim: 3.07 x 1.02
Degree of Protection: IP65
Output: 200-875 lm/ft
Spec sheet : [Here](#)



MUD-IN MR2

Part #: 3-MR2-S-NB-CP
Dim: 2 x .8
Degree of Protection: IP40
Output: 200-823 lm/ft
Spec sheet : [Here](#)



DESIGNER DR55

Part #: 3-DR55-S-D-CP
Dim: 0.78 x 0.22
Degree of Protection: IP40
Output: 823 lm/ft
Spec sheet : [Here](#)



ROUND CORNER RC16

Part #: 3-RC16-S-D-CP
Dim: .63 x .63
Degree of Protection: IP20-IP65
Output: 200-875 lm/ft
Spec sheet : [Here](#)

View all channel options [here](#).



LEDSCAPE OUTDOOR POWER SUPPLY

The LEDscape Series of Constant Voltage Class 2 LED Drivers from offers both cETLus style enclosures. The enclosure has a built-in junction box on both the input and output. These drivers are IP68 and are suitable for all locations. With universal input voltage ranging from 120 to 277VAC, this series of drivers are designed for commercial, industrial and residential applications. Our 5in1 smooth flicker-free linear dimming down to 1% and a wide variety of compatible dimmers, including 0-10V, Magnetic and Low voltage.

PRODUCT HIGHLIGHTS

- **INPUT VOLTAGE:** 120/277 V
- **OUTPUT VOLTAGE:** Variable 18-25V
- **INPUT FREQUENCY:** 50/60 HZ
- **OPERATING TEMP:** -13°F – 104°F
- **DEGREE OF PROTECTION (IP):** IP68
- **DIMMABLE:** to 1%
- **CLASS 2:** All sizes
- **LOAD REQUIREMENTS:** 10%

Note: If using outdoor, verify contractor use included water and moisture tight enclosure. Not direct burial rated.

POWER AND CONNECTION DIAGRAM



POWER SUPPLY = Product Wattage X Length

24 Nominal supply voltage of LEDscape in Volt
Recommended MAC output of power supply 80%

To calculate MAX run distance from Power Supply to LED
reference power drop chart : [Here](#).

CHARACTERISTICS

Power	Output Current	Efficiency	Power Factor	Dimensions
30W	1250mA	> 86%	>0.95	7.50" L X 3.62" W X 1.65"H
60W	2600mA	> 86%	>0.95	7.50" L X 3.62" W X 1.65"H
96W	4800mA	> 86%	>0.95	8.50" L X 3.66" W X 1.65"H
120W (2x60 watt)	5000mA	> 86%	>0.93	10.15" L X 4.85" W X 1.65"H
192W (2x96 watt)	8000mA	> 86%	>0.93	10.15" L X 4.85" W X 1.65"H
288W (3x96 watt)	8000mA	> 86%	>0.93	12.44" L X 4.85" W X 1.65" H
384W (4x96 watt)	16000mA	> 86%	>0.93	12.44" L X 4.85" W X 1.65" H

ORDERING CHART

NOTE: View additional options [here](#).

Ordering Example: PS-24-0-D3-60-U

Series		Output Voltage		Environment		Dimming		Wattage		Voltage Input	
PS	Power supply	24	24V	0	Outdoor/Indoor	ND	Non Dimming	30	10-30W	U	120/277V
						D3	5 in 1 Dimming	60	31-60W		
								96	61-96W		
								120	97-120W		
								192	121-192W		
								288	193-288W		
								384	289-384W		
								CU	Custom Output		

DISCLAIMER: The information on these pages are as accurate as possible, however LEDscape or any reseller of LEDscape cannot be held liable for any damages resulting from errors or outdated information. LEDscape reserves the right to modify the information without informing the customers. Check for the latest version on the Internet, the most up to date information will be published on www.ledscape.com. Qualified and Licensed Electrical Contractor must install the product. This product should not be used in applications, devices or systems where incorrect operation of the product may result in personal injury (includes emergency lighting) without written permission from LEDscape. If nevertheless used in such applications, devices or systems LEDscape cannot be held liable for any resulting injury.