

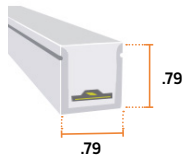
LEDSCAPE FLEX NEON MULTI BEND-COLOR CHANGING IP65/IP67

LEDscape LED NEON Multi Bend by LED strip (IP67) is a high quality, flexible LED strips with a unique, diffuse co-extrusion technology that allows horizontal and vertical bending. The combination of high quality and exceptional flexibility, allows for an endless range of indoor and outdoor applications. The LEDscape offers a pre-assembled mirror welded connector for instant waterproof IP67 usage.

PRODUCT HIGHLIGHTS

- **BINNING:** ±50K
- **CRI:** 90
- **EXPECTED LIFETIME:** L70 > 50,000 hours
- **OPERATING TEMP:** 22°F – 131°F (-30°C – 55°C)
- **DEGREE OF PROTECTION:** IP67
- **Rating:** UL
- **RADIUS RADIUS:** 7.87 in & 11.0 in
- **CORD LENGTH EXPECTED:** 3 ft
- **OPERATING VOLTAGE:** 24V, constant voltage
- **WARRANTY:** 5 year
- **FEATURES:** Dimmable, Plug & Play, Assorted colors, Accessories available, Effective heat dissipation, Excellent lumen/watt ratio, very flexible, custom output, custom colors.

*Not color chasing, illustration of RGBW only



AVAILABLE COLORS

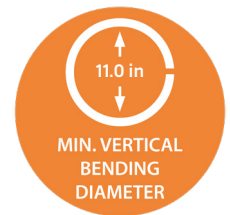
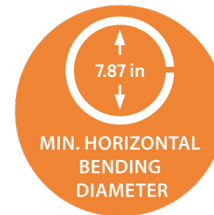
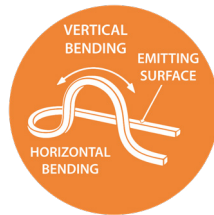
- TW 2700-6000K
- RGB/RGBW
- Custom

CHARACTERISTICS

Power	Length Inc. ¹	Lumen per foot ²	Max Run Length ³	Dimming
RGBW 4.27 w/ft	0.96 in	158 lm	16.4 ft	DMX
D-RGBW 4.27 w/ft		158 lm		DMX
TW 4.27 w/ft		280 lm		DMX, Warm-Dim, Tunable

Notes:
 1. **Length Increments:** Refers to the Strip's cuttable segments.
 2. **Lumen per foot:** Calculated with all colors on.
 3. **Max Run Length:** Refers to the Strip's total run lengths from the connector to the end.

Lumen for white only. MAX. connection length between -35 - 45 °C. LEDscape reserves the right to modify the information above without notice. All circuits with LEDscape product should have surge protection for valid warranty.



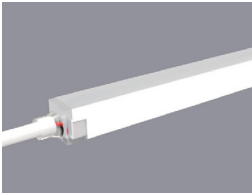
ORDERING CHART

Example: 16-FLEX-NM-L-RGBW-S67-AB

Length	LED Stock Code	Series	Color	Connector & Environment	Mounting			
16 ft <small>NOTE: Refer to Max Run lengths. If total exceeds, you will receive multiple pieces. Example: 32 ft = (2) 16 ft</small>	FLEX LED Strip	NM-L Neon Multi Bending Large (Outdoor IP65/67)	RGBW27	RGBW 27K	S67	Straight feed IP67	SC	Mounting Bracket
			RGBW30	RGBW 30K	B67	Bottom feed IP67	BC	Bendable Channel
			RGBW35	RGBW 30K	SA67	Side feed IP67	AC	Aluminum Channel
			RGBW40	RGBW 40K				
			RGBW50	RGBW 50K				
			RGBW60	RGBW 60K				
			TW	22-57K				
			CU	Custom Color				

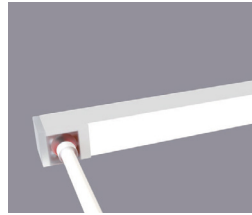
Notes:
 Product sold PER FOOT. Ships with factory IP67 Connection and end cap. Stock code may differ from UL/ETL certification, consult factory if required.

FLEX NEON LED CONNECTORS & MOUNTING



S67 STRAIGHT CONNECTOR SET IP67

Part #: Flex-NM-L-Conn-S67 (large)
Part #: Flex-T-NM-S-Conn-S67 (small)
Cord length: 3 ft
Dimensions: 0.12 L x 0.80 W x 0.80 inch (large)
 0.12 L x 0.45 W x 0.45H inch (small)



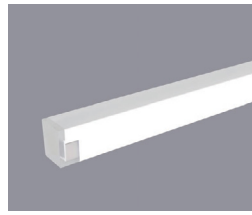
SA67 SIDE CONNECTOR SET IP67

Part #: Flex-NM-L-Conn-SA67 (large)
Part #: Flex-T-NM-S-Conn-SA67 (small)
Cord length: 3 ft
Dimensions: 0.12 L x 0.80 W x 0.80 inch (large)
 0.12 L x 0.45 W x 0.45H inch (small)



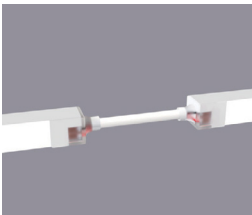
BA67 BOTTOM CONNECTOR SET IP67

Part #: Flex-NM-L-Conn-B67 (large)
Part #: Flex-NM-S-Conn-B67 (small)
Cord length: 3 ft
Dimensions: 0.12 L x 0.80 W x 0.80 inch (large)
 0.12 L x 0.45 W x 0.45H inch (small)



EC67 END CAP IP67

Part #: Flex-NM-L-Conn-EC67 (large)
Part #: Flex-NM-S-Conn-EC67 (small)
Dimensions: 0.12 L x 0.80 W x 0.80 inch (large)
 0.12 L x 0.45 W x 0.45H inch (small)



JMP67 JUMPER IP67

Part #: Flex-NM-L-JMP67XX (large)
Part #: Flex-NM-S-JMP67XX (small)
Length: XX (inches, customer to specify)
Dimensions: 0.12 L x 0.80 W x 0.80 inch (large)
 0.12 L x 0.45 W x 0.45H inch (small)



EC40/67 END CAP IP40 & IP65

Part #: Flex-T-NM-L-EC40/65 (large)
Part #: Flex-T-NM-L-EC40/65 (small)
Dimensions: 0.15 L x 0.90 W x 0.90 inch (large)
 0.12 L x 0.55 W x 0.55H inch (small)

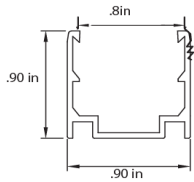
Note: IP67 Connector ships factory assembled with corresponding end cap. Customer may elect to cut and use IP40/65 end cap in the field, but installed assumes all responsibility for correct waterproofing and does not fall under factory warranty.

NEON LED MOUNTING

AC ALUMINUM CHANNEL (LARGE)

Part # 3-Flex-NM-L-AC

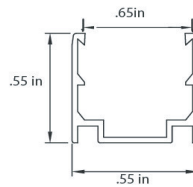
Length: 3 ft



AC ALUMINUM CHANNEL (SMALL)

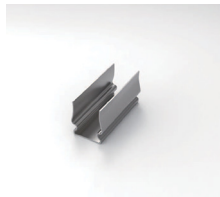
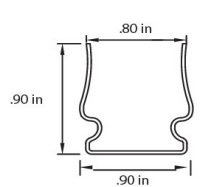
Part # 3-Flex-NM-S-AC

Length: 3 ft



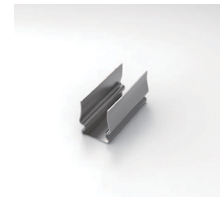
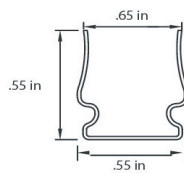
SC STAINLESS STEEL CLIP (LARGE)

Part # 3-Flex-NM-L-SC



SC STAINLESS STEEL CLIP (SMALL)

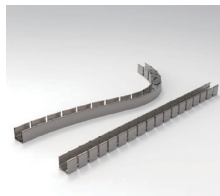
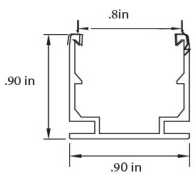
Part # 3-Flex-NM-S-SC



BC BENDABLE STAINLESS STEEL CHANNEL (LARGE)

Part # 3-Flex-NM-L-BC

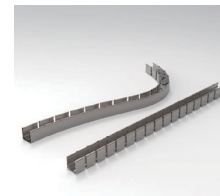
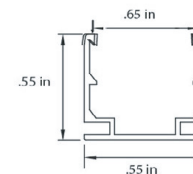
Length: 3 ft



BC BENDABLE STAINLESS STEEL CHANNEL (SMALL)

Part # 3-Flex-NM-S-BC

Length: 3 ft



Channels provided in 3 FT segments. 6 FT segments available on request. MOQ applies



LEDSCAPE DMX POWER SUPPLIES

The LEDscape Series of Constant Voltage Class 2 LED Drivers from offers both cETLus style enclosures. The enclosure has a built-in junction box on both the input and output. These drivers are IP68 and are suitable for all locations. With universal input voltage ranging from 120 to 277VAC, this series of drivers are designed for commercial, industrial and residential applications. Our DMX RGBW smooth flicker-free linear dimming down to 1% with any DMX controller. RDM Protocol for ease of on-site programming.

PRODUCT HIGHLIGHTS

- **INPUT VOLTAGE:** 120/277 V
- **OUTPUT VOLTAGE:** Variable 18-25V
- **INPUT FREQUENCY:** 50/60 HZ
- **OPERATING TEMP:** -13°F – 104°F
- **PROTOCOL:** DMX512 RDM
- **DEGREE OF PROTECTION (IP):** IP68
- **DIMMABLE:** to 1%
- **CLASS 2:** All sizes
- **LOAD REQUIREMENTS:** 10%

Note: If using outdoor, verify contractor use included water and moisture tight enclosure. Not direct burial rated.

POWER AND CONNECTION DIAGRAM

$$\text{POWER SUPPLY} = \text{Product Wattage} \times \text{Length} \times 120 \times \left[\frac{U \text{ Supply}}{24} \right]$$

OPTIONS:

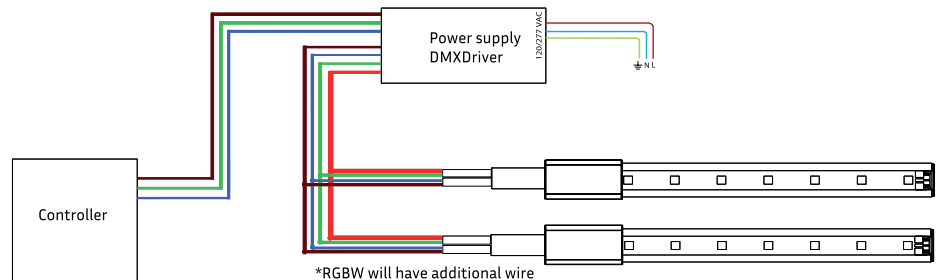
U Set supply voltage of the power supply in Volt
24 Nominal supply voltage of LEDscape in Volt
Recommended MAC output of power supply 80%

To calculate MAX run distance from Power Supply to LED reference power drop chart : [Here](#).

Note: If using outdoor, verify contractor use included water and moisture tight enclosure. Not direct burial rated.

CHARACTERISTICS

Power	Output Current	Efficiency	Power Factor	Dimensions
120W	4100mA	> 95%	>0.95	9.50" L X 3.62" W X 1.65" H
300W	8200mA	> 95%	>0.95	12.5" L X 10.25" W X 1.81" H



ORDERING CHART

NOTE: View additional options [here](#).

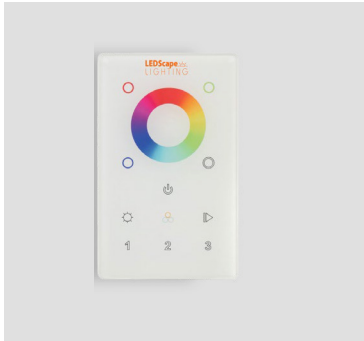
Ordering Example: PS-24-0-DMX-120-U

Series		Output Voltage		Environment		Dimming		Wattage		Voltage Input	
PS	Power Supply	24	24V	0	Outdoor/Indoor	DMX	DMX 512	120	60-120W	U	120/277V
								300	121-300W		
								CU	Custom Output		

Notes:

Power Supplies should still be in outdoor enclosure if direct buried application. LEDscape Lighting does NOT conduct start-up and/or programming. Advise to hire DMX professional if needed.

DISCLAIMER: The information on these pages are as accurate as possible, however LEDscape or any reseller of LEDscape cannot be held liable for any damages resulting from errors or outdated information. LEDscape reserves the right to modify the information without informing the customers. Check for the latest version on the Internet, the most up to date information will be published on www.ledscape.com. Qualified and Licensed Electrical Contractor must install the product. This product should not be used in applications, devices or systems where incorrect operation of the product may result in personal injury (includes emergency lighting) without written permission from LEDscape. If nevertheless used in such applications, devices or systems LEDscape cannot be held liable for any resulting injury.



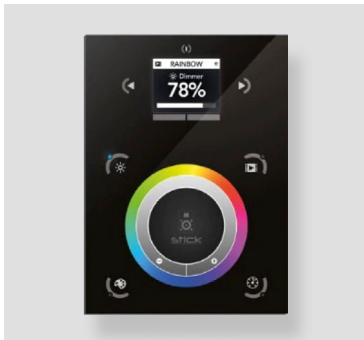
LEDSCAPE DMX CONTROLLERS

LEDscape Wall Color Controller allows for smooth color control and dimming all in one. The Wall Mounted Version fits in a standard switch box. It operates with all DMX 512 Drivers and decoders. You can set up to 3 Zones per controller and does not have any preset settings. 12-36V compatible.

ORDERING CHART

Ordering Example: DXC-DMX-I-W

Series		Type		Environment		Control	
DXC	DMX Controller	DMX	DMX 512	I	Indoor	W	Wall Mounted



ADVANCED COLOR CONTROLLER

LEDscape Wall Color Controller by Nicolaudie is aimed at architectural lighting installations requiring an advanced level of programming (color changing effects, specific colors etc). The controller provides a clean and user-friendly panel. Featuring an on/off button, 6 scene buttons and a color wheel, the controller is ideal for hotels, homes and public environments.

With 1024 DMX channels, Wi-Fi for remote network control and scene calendar triggers USB programmable from a PC or Mac, up to 10 zone, 36 scenes can be stored within the controller and directly recalled via 6 touch sensitive buttons.

ORDERING CHART

Ordering Example: DXC-Pro-RGBW-I

Series		COLOR		Environment	
DXC-Pro	Professional DMX Controller	RGBW	RGB	I	Indoor

LEDscape Lighting does NOT conduct start-up and/or programming. Advise to hire DMX professional if needed. The Pro DMX Controller does require programming on-site.

DISCLAIMER: The information on these pages are as accurate as possible, however LEDscape or any reseller of LEDscape cannot be held liable for any damages resulting from errors or outdated information. LEDscape reserves the right to modify the information without informing the customers. Check for the latest version on the Internet, the most up to date information will be published on www.ledscape.com. Qualified and Licensed Electrical Contractor must install the product. This product should not be used in applications, devices or systems where incorrect operation of the product may result in personal injury (includes emergency lighting) without written permission from LEDscape. If nevertheless used in such applications, devices or systems LEDscape cannot be held liable for any resulting injury.



LEDSCAPE CCT POWER SUPPLIES

The LEDscape Series of Constant Voltage Class 2 LED Drivers from offers both cETLus style enclosures. The enclosure has a built-in junction box on both the input and output. These drivers are IP68 and are suitable for all locations. With universal input voltage ranging from 120 to 277VAC, this series of drivers are designed for commercial, industrial and residential applications. Our smooth flicker-free linear dimming down to 1% with most Dimmers. Pick from Dim to Warm OR CCT Tunable.

PRODUCT HIGHLIGHTS

- **INPUT VOLTAGE:** 120/277 V
- **OUTPUT VOLTAGE:** Variable 18-25V
- **INPUT FREQUENCY:** 50/60 HZ
- **OPERATING TEMP:** -13°F – 104°F
- **CCT TUNABLE:** Triac, 0-10V
- **WARM DIM:** Triac, 0-10V
- **DEGREE OF PROTECTION (IP):** IP68
- **DIMMABLE:** to 1%
- **CLASS 2:** All sizes
- **LOAD REQUIREMENTS:** 10%

Note: If using outdoor, verify contractor use included water and moisture tight enclosure. Not direct burial rated.

POWER AND CONNECTION DIAGRAM

POWER SUPPLY = Product Wattage X Length

OPTIONS:

24 Nominal supply voltage of LEDscape in Volt
Recommended MAC output of power supply 80%

To calculate MAX run distance from Power Supply to LED reference power drop chart : [Here](#).

Note: If using outdoor, verify contractor use included water and moisture tight enclosure. Not direct burial rated.

CHARACTERISTICS

Power	Output Current	Efficiency	Power Factor	Dimensions
30W	1250mA	> 96%	>0.95	7.50" L X 54.05" W X 1.65"H
96W	4800mA	> 96%	>0.95	8.50" L X 4.05" W X 1.65"H
150W	6100mA	> 86%	>0.95	12.15" L X 4.85" W X 1.65"H

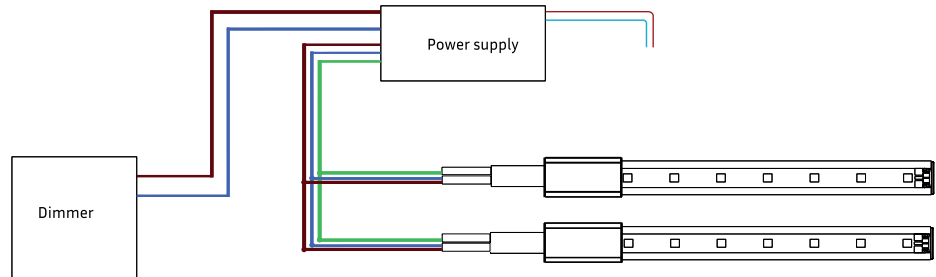


Illustration only, setup may differ. consult install instructions

ORDERING CHART

NOTE: View additional options [here](#).

Ordering Example: PS-24-0-CCT-60-U

Series		Output Voltage		Environment		Dimming		Wattage		Voltage Input	
PS	Power Supply	24	24V	0	Outdoor/Indoor	CCT	Tunable White & Warm Dimming	30	30W	U	120/277V
								96	31-96W		
								150	97-150W		
								CU	Custom Output		

DISCLAIMER: The information on these pages are as accurate as possible, however LEDscape or any reseller of LEDscape cannot be held liable for any damages resulting from errors or outdated information. LEDscape reserves the right to modify the information without informing the customers. Check for the latest version on the Internet, the most up to date information will be published on www.ledscape.com. Qualified and Licensed Electrical Contractor must install the product. This product should not be used in applications, devices or systems where incorrect operation of the product may result in personal injury (includes emergency lighting) without written permission from LEDscape. If nevertheless used in such applications, devices or systems LEDscape cannot be held liable for any resulting injury.